

Range
—
MEET



PRICELIST

OVH-HINNASTO (sis. alv. 25,5%) - EURO

FINLAND

01.09.2023



Range

MEET

The unique feature of the MEET range is the “floating detail” between the legs and the plate.

In this pricelist you will also find some geometrical and elegant coffee tables / side tables with steel legs.

Designed by

Cecilie Kamp



This range include

Coffee tables
Stools
Side tables

Features



Design elements

Choose between different designs and products.



Custommade

In addition to our many standard sizes we can accommodate special requests.



Wood colours

Choose between more than 10+ different wood colours in both ash and oak.



Sustainable choice

Solid wood furniture can last a lifetime with proper maintenance

Social media

Follow and share with us on Instagram.

 @kristensenfurniture | #kristensenfurniture

Pricelist- and imagebank

On our Collection-site you as a retailer always have access to the latest pricelists and hundreds of high resolution images and videos - **Free to use in your marketing!**

If you do not have a password yet, please contact the Kristensen sales office in Denmark.

LINK:

<https://collection.kristensen.com/>

PRICELIST

3-legged stool / side table



OVERALL ITEM NO.: MEST			
(3 cm plate thickness)			
Measures (cm)	Price group	Price (EUR)	
		Ash	Oak
D39 H45	1	215	269
D39 H45	2	317	396
D39 H45	3	333	416
D39 H45	4	345	431
D39 H45	5	420	506

PRICE GROUP / FABRIC

-
- 1 / Textafoam **Mine** 2 selected colours
or a 3 cm thick solid wood seat
(w/no upholstery)
- 2 / Textafoam **Alpine** 3 selected colours
- 3 / Nevotex **Wooly** 3 selected colours
- 3 / Nevotex **Margrethe** 1 selected colour
- 3 / Gabriel **Grain** 4 selected colours
- 4 / Nordic Spoor **Sigma** 4 selected colours
- 5 / Sørensen Leather **Terra** 3 selected colours



See all the fabrics to choose from - in the back of this pricelist!

PRICELIST

3-legged coffee table



OVERALL ITEM NO.: MECT			
(3 cm plate thickness)			
Measures (cm)	Item no.	Price (EUR)	
		Ash	Oak
D60 H45	MECT-60H45	718	898
D60 H50	MECT-60H50	735	919
D90 H45	MECT-90H45	1.052	1.315
D90 H50	MECT-90H50	1.069	1.336
D110 H45	MECT-110H45	1.307	1.633
D110 H50	MECT-110H50	1.318	1.648
D120 H45	MECT-120H45	1.465	1.831
D120 H50	MECT-120H50	1.471	1.838

PRICELIST

Round side table w/steel legs & handle

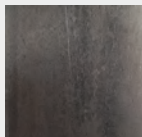


OVERALL ITEM NO.: WGR			
(3 cm plate thickness)			
Measures (cm)	Item no.	Price (EUR)	
		Ash	Oak
D38 H42/54*	WGR38X42	601	660
D38 H48/60*	WGR38X48		
D42 H42/54*	WGR42X42	638	701
D42 H48/60*	WGR42X48		

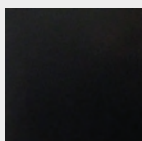
*plate hight/total hight

Leg options

5x30 mm solid steel



A
Industrial
steel



B
Black
painted steel

PRICELIST

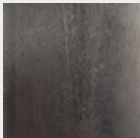
Round coffee table w/steel legs



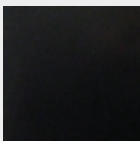
OVERALL ITEM NO.: WCI			
(3 cm plate thickness)			
Measures (cm)	Item no.	Price (EUR)	
		Ash	Oak
D40 H51	WCI40X51	545	601
D40 H61	WCI40X61		
D70 H41	WCI70X41	855	940
D70 H51	WCI70X51		
D100 H41	WCI100X41	1.009	1.110
D100 H51	WCI100X51		

Leg options

8x30 mm solid steel



A
Industrial
steel



B
Black
painted steel

RUBIO MONOCOAT WOOD COLOURS

ENVIRONMENTALLY FRIENDLY OIL COLOURS

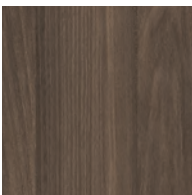
- Rubio Monocoat is sustainable, certified high quality wood protection
- Gives a durable color and protection of the wood
- Very easy to maintain



Rubio[®]
MONOCOAT

www.rubiomonocoat.com

RUBIO MULCH
ASH 521



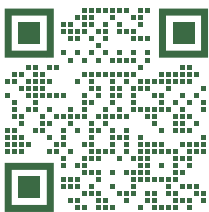
RUBIO OCEAN
ASH 522



RUBIO DAHLIA
ASH 523



GET MORE INFORMATION ABOUT HOW TO TAKE
CARE OF YOUR RUBIO OILED FURNITURE



Scan for direct
link to information
about maintenance



Images for guiding purpose only!

The wood structure and colour will vary from ash and oak.

We therefore recommend using the wood samples/exhibition furniture to get a more accurate impression.

WOOD COLOURS



ASH C3 / OAK C3
Lacquered

We treated this wood with lacque.

C3 are only made for products without patination.



ASH C4 / OAK C4
Natural oiled

We treated this wood with our 'Natural oil'.



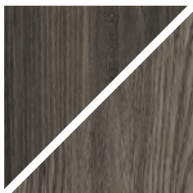
ASH C6 / OAK C6
White oiled

We treated this wood with our 'White oil'.



ASH C8 / OAK C8
Soaped

We treated this wood with soap.



ASH C11 / OAK C11
Dark grey oiled

We treated this wood with our 'Black oil'.



ASH C12 / OAK C12
Antique brown oiled

We treated this wood with our 'Antique brown oil'.



ASH C13 / OAK C13
Light grey oiled

We treated this wood with our 'Light grey oil'.



ASH C14 / OAK C14
Black stained & oiled

We treated this wood with black stain, and treated it with a wax oil.

C14 is for legs and storage furniture only!



ASH C15 / OAK C15
Mocca brown oiled

We treated this wood with our 'Mocca brown oil'.



ASH C16
Warm white oiled

We treated this wood with our 'Warm white oil'.

C16 is only for ash



ASH C20 / OAK C20
Grey brown oiled

We treated this wood with our 'Grey brown oil'.



ASH C44 / OAK C44
Black matt lacquered

We treated this wood with black stain, and treated it with matt lacque.

C44 is only for plates and can only be made for products without patination.



For more information about maintenance, please visit our website:
WWW.KRISTENSEN.COM



We also offers our own repairoils for our products
- contact us if you need a pricelist.

WOOD FINISH



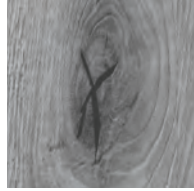
UP

Without patination

The wood is planned and sanded to achieve a smooth surface.

With few and smaller knots.

Storage furniture can only be made with this finish!



FK

Filled Knots

The knots are filled and the wood is planned and sanded to achieve a smooth surface.

Only for OAK!

5

Price group

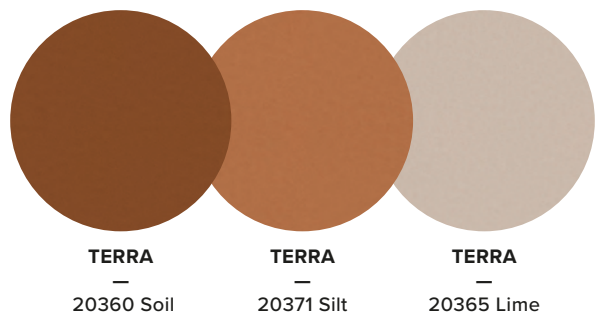
TERRA

Aniline leather

Terra is an extremely soft aniline leather featuring a silky-matt surface with a subtle shine and a velvety tactile feel that evokes one's senses, offering a touch of modern sophisticated elegance. The sanded surface with depth gives Terra a beautiful vintage look.

Material: 100% European aniline leather
Thickness: 1,2 - 1,4 mm

Manufacturer:
sorensenleather.com

**SØRENSEN**

TERRA
—
20360 Soil

TERRA
—
20371 Silt

TERRA
—
20365 Lime

4

Price group

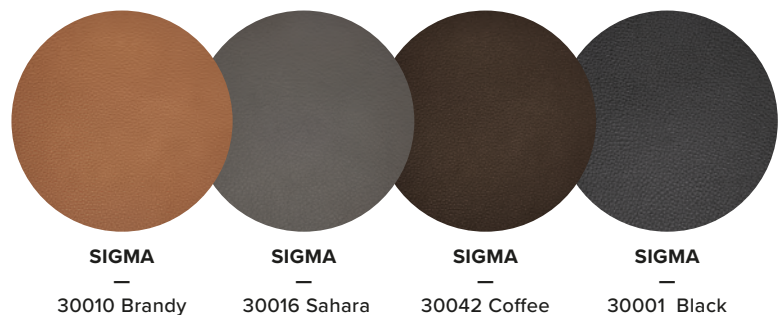
SIGMA

Semianiline leather

Sigma is a high quality, Argentine semianiline leather. This leather has a nice texture and a super soft feel. This leather gives a practical yet luxurious chair.

Material: 100% Argentine semianiline leather
Thickness: 1,1 - 1,3 mm

Manufacturer:
www.nordicspoor.com

SPOOR.

SIGMA
—
30010 Brandy

SIGMA
—
30016 Sahara

SIGMA
—
30042 Coffee

SIGMA
—
30001 Black

3*Price group*

GRAIN

Recycled Polyester Bouclé

Grain is a post-consumer recycled polyester bouclé fabric. The fabric is designed in two versions that playfully complement each other. Choose between a solid version and a duo-coloured version.

Material: 92% post-consumer recycled polyester / 8% polyester

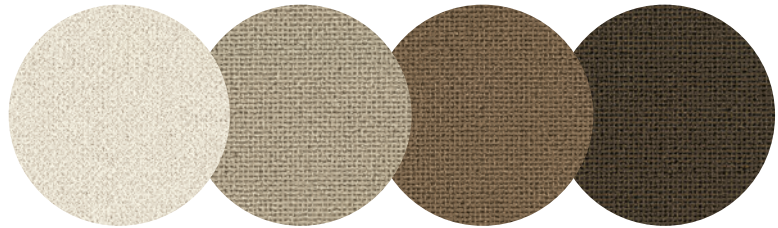
Martindale: 100,000

Maintenance: wash or dry cleaning

Manufacturer:

www.gabriel.com

Gabriel®

**GRAIN**

2287 / 61229

GRAIN

2288 / 61253

GRAIN

2288 / 61248

GRAIN

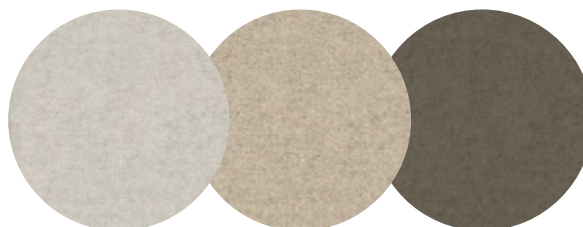
2288 / 61249

3*Price group***WOOLY***Recycled felted wool*

Wooly is made of felted recycled wool. It may be leftover material from clothing manufacturing or other wool products that are recycled. Each kilogram of pure new wool produced generates 9 kg of carbon dioxide. Processing 1 kilo of recycled wool generates just 0.5 kg of carbon dioxide.

Material: 70% recycled wool, 25% polyamide, 5% mixed fibers
Martindale: 250,000

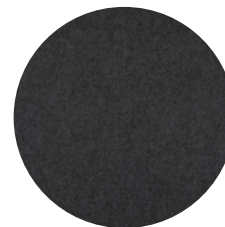
Manufacturer:
www.nevotex.com

nevotex**WOOLY PLUS**—
2256 Ivory
Melange**WOOLY**—
2151 Beige**WOOLY PLUS**—
9202 Taupe**MARGRETHE***Recycled woven wool*

Margrethe is made of woven recycled wool. It may be leftover material from clothing manufacturing or other wool products that are recycled. Each kilogram of pure new wool produced generates 9 kg of carbon dioxide. Processing 1 kilo of recycled wool generates just 0.5 kg of carbon dioxide.

Material: 70% recycled wool, 25% polyamide, 5% mixed fibers
Martindale: 250,000
Maintenance: dry cleaning

Manufacturer:
www.nevotex.com

nevotex**MARGRETHE**—
16 Antracite

2*Price group*

ALPINE

Polyester Bouclé

Alpine is a soft, voluminous and elegant bouclé woven quality.

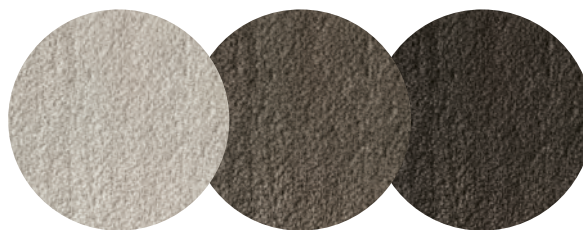
Material: 96% Polyester 4% Acrylic Fibres

Martindale: 75.000

Maintenance: Wash or dry cleaning

Manufacturer:

www.textafoam.eu

Textafoam**ALPINE**—
01 Natural**ALPINE**—
15 Brown**ALPINE**—
18 Darkbrown**1***Price group*

MINE

Polyester Chenille

Mine is a soft yet durable chenille fabric with many applications.

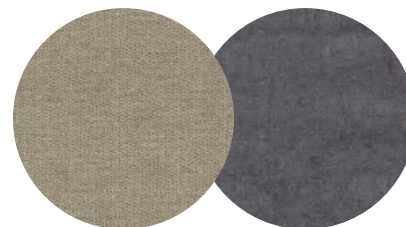
Material: 96% Polyester, 4% Nylon

Martindale: 45.000

Maintenance: Wash or dry cleaning

Manufacturer:

www.textafoam.eu

Textafoam**MINE**—
196 Shell**MINE**—
65 Grey

OTA YHTEYTTÄ

Olen meihin yhteydessä lisätietoja saadaksesi!

Head office, Denmark

OSOITE:

Kristensen & Kristensen A/S
Storstrømsvej 44
6715 Esbjerg N
DK - Denmark

PUHELIN:

+45 75470303

FAX:

+45 75470304

KOTISIVU:

www.kristensen.com

MAIL:

kristensen@kristensen.dk

TILAUKSET:

order@kristensen.dk

REKLAMAATIOT:

claim@kristensen.dk

Edustaja Suomessa

Jokko Salmevaara

—

✉ jokko.salmevaara@boknas.fi

☎ +358 040 195 8886